

# reFUTURE – Towards A New Landscape Urbanism

## Transformation of Urban Green Space Into Ecological/ Cultural Mixed Use Landform + Off Grid Habitats

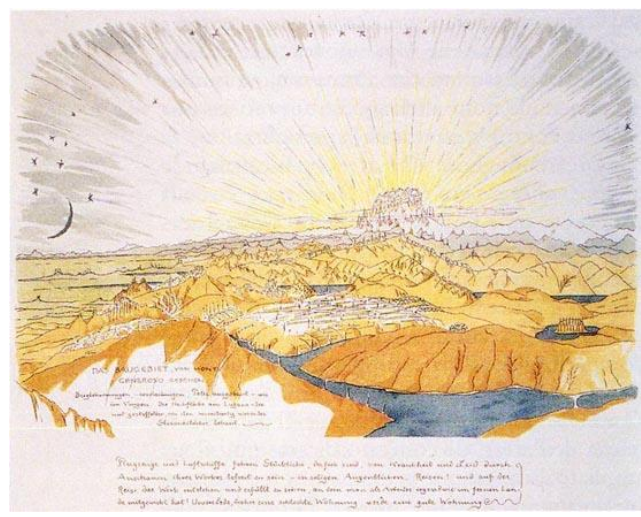


"Once considered an underground gathering for bohemians and free spirits of all stripes, Burning Man has since evolved into a destination for social media influencers, celebrities and the Silicon Valley elite....."



At Burning Man, the participants design and build all the art, activities, and events.<sup>[6]</sup> Artwork at Burning Man includes experimental and interactive sculptures, buildings, performances and art cars, among other media....."

NPR



"The drawing appears in *Alpine Architektur*, a book by Bruno Taut, in which he portrays his utopic project for a city in the Alps. This is the view from the Monte Generoso (lamina 17). *Alpine architecture* was a free project, solved with no apparent restrictions, no limitations owing to the place, material, or economy's conditions. They were houses made of crystal on the mountains top, designed only for silent gazing and located next to the lakes, which reflected the buildings and the sparkling sunshine...."

The project has to be understood as a reaction to the processes that lead to World War I, and the following situation. It emerges from the belief that big industrial accumulations perpetuate the old social order, and they have to be replaced by a kind of decentralized community...."

extract fm. BRUNO TAUT, *Architecture in the Alps*, 1919 Francisco Martinez Mindegula



"Augmented reality (AR) , interactive experience of a real-world environment where the objects that reside in the real world are enhanced by computer-generated perceptual information, sometimes across multiple sensory modalities, including visual, auditory, haptic, somatosensory and olfactory.

Technical definitions aside, planning of AR should happen parallel to the real physical world. Augmented landmarks will become part of our collective awareness, a seamless part of the cityscape. At the opposite end of our consciousness ,AR can exist modestly , undetected , exist only as a shade of light , subtle hint that improve and "touch up" without us knowing.

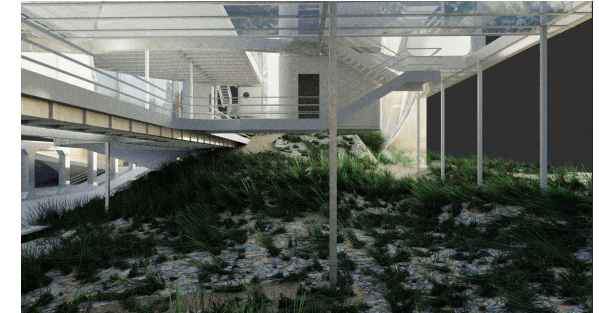
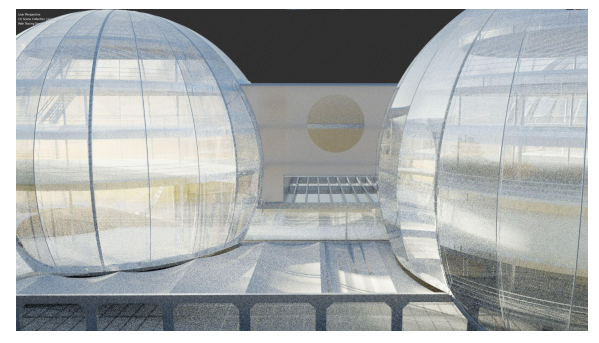
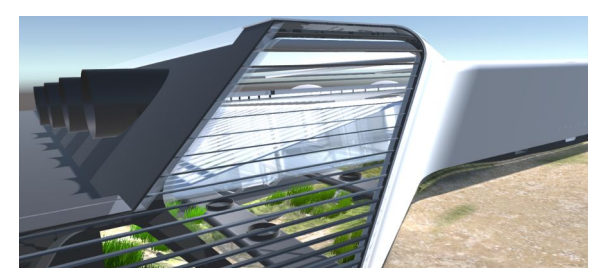


### terraform earth

"Terraform means to change the environment of a planet to make it like Earth or at least make it able to support life like Earth does. The idea of terraforming a planet (or another celestial body, like a moon) so humans and other life forms could survive there was originally just the stuff of science fiction...."

Terraform Earth imply returning earth to its natural state, a flesh chance for us to integrate or become part of nature and all its inhabitants...."

it is about making effort to built not with concrete but a geo-ecological palette that serve a kind of existent that we al long missed.



a new evolution of architectural typologies will be developed to couple with the new and unique mix of urban and landscape. to immense and to protect of the natural setting it inhabit, at the same time take full advantage of its close proximity of traditional urban infrastructure .

"Landscape urbanism addresses issues of economy, ecology, and the socio-urban context. It is a theory that argues the best way to organize cities is through the city's landscape and its environmental planning. Instead of traditional urbanism where designs revolved around roads, buildings, and green spaces were relegated to left-over areas unsuited for building or were used for ornamentation. Landscape urbanism offers a fresh new perspective for organizing urban form around the cultural and natural processes."

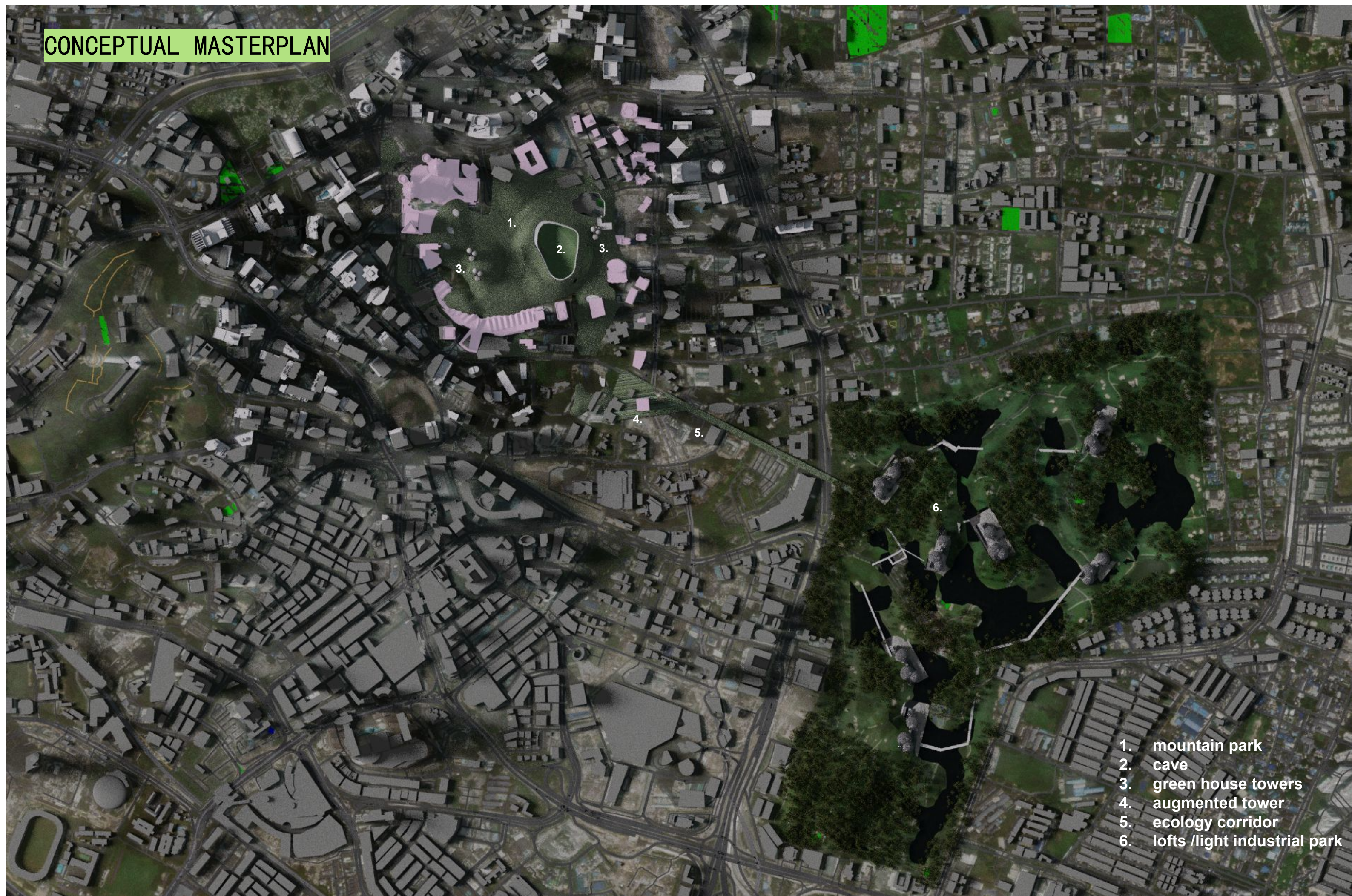
As our world, people, and things around us become more and more complicated and unsettling, as troubling world events mixed with technologies breakthrough, as the boundaries between mainstream sciences and science frictions continue to blur, as our very own physical tangible world transcends with the meta physical, our notion of future shifts.

As current collective vision of what is desirable and what is becoming :

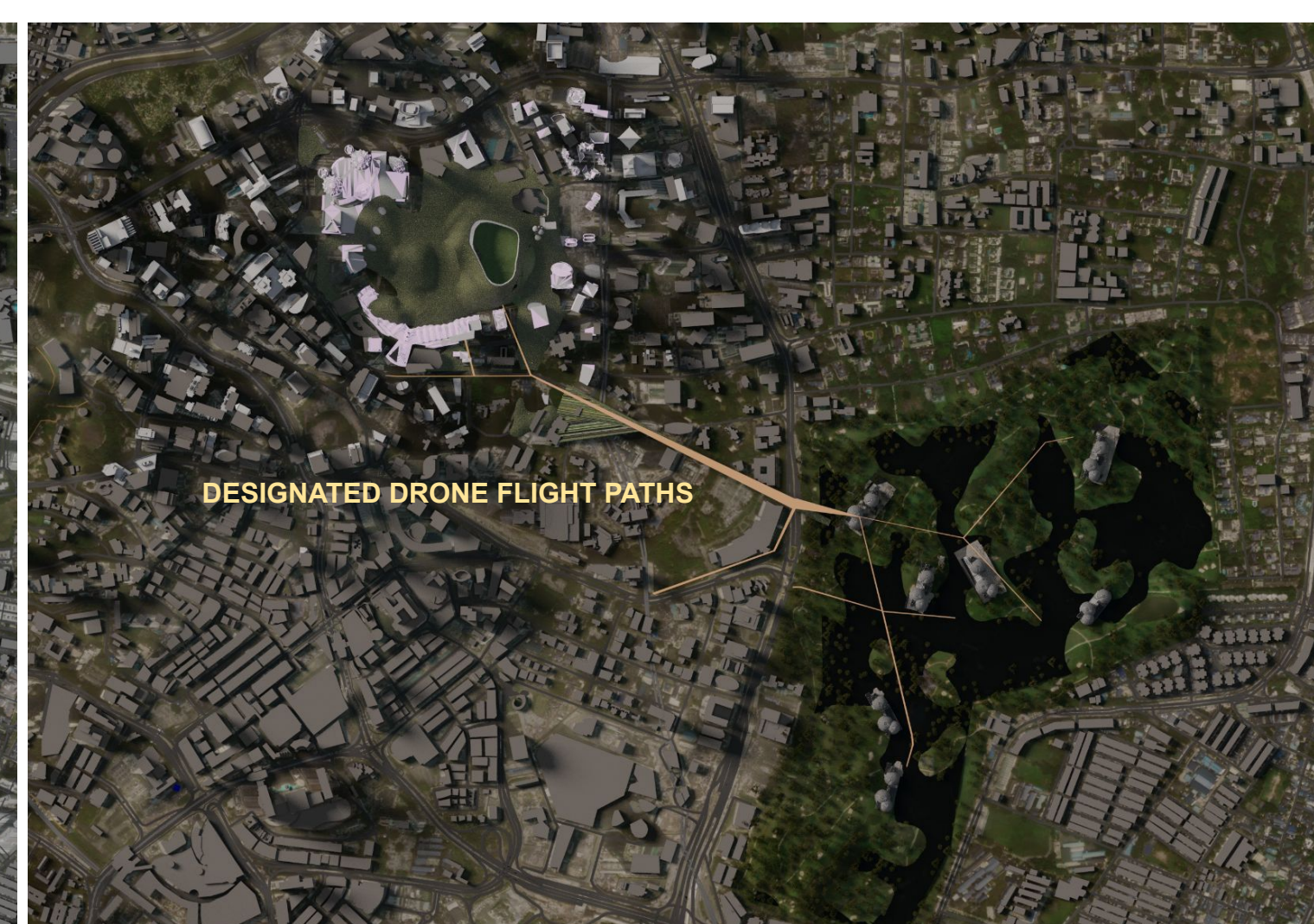
- reversing the process of hard edged planning and urbanism,
- post pandemic social and transportation reform.
- virtual reality (VR) and argumented reality (AR) and the physical and mechanical extension of artificial intelligence (AI)

Responding to these new realms, the proposal seeks for implementation of these desires. Two snapshots form our imaginations regarding what is becoming :

1. TRANSPOSING the capital city's park into a RURAL landscape while housing art and cultural activities within it.
2. TERRAFORMING by reclaiming city open green spaces with full geo-ecology structures while adopting new ways to inhabit these newly reclaimed environment.



1. mountain park
2. cave
3. green house towers
4. augmented tower
5. ecology corridor
6. lofts /light industrial park



### EXISTING CONDITION

PETRONAS TOWERS

MASJIDASY-SYAKIRIN

KLCC PARK

AQUARIA KLCC

PUSAT KONVENSYEN KL

SELANGOR GOLF CLUB

### DESIGNATED DRONE FLIGHT PATHS



# INHABITING THE NEW

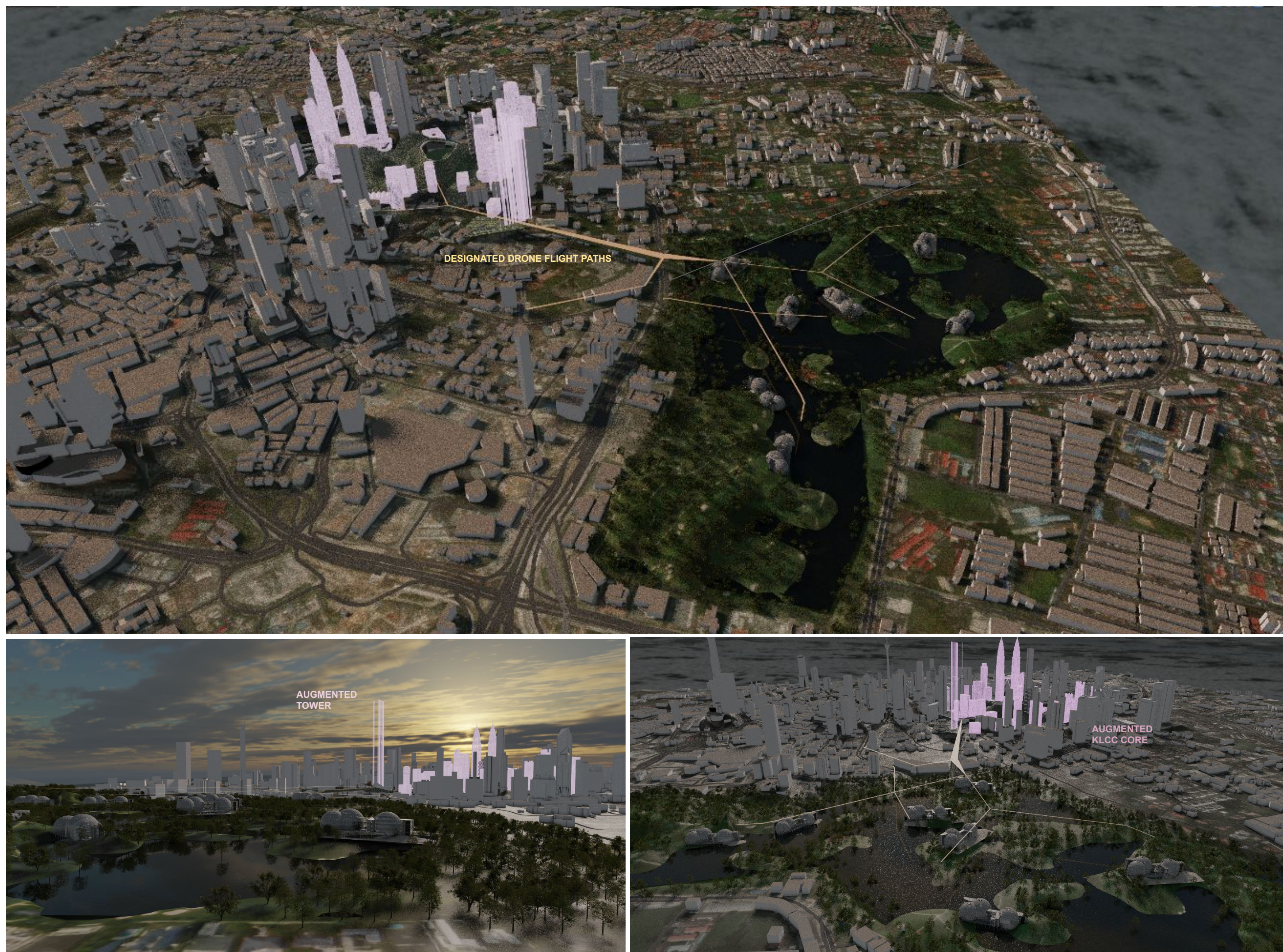
## CULTURAL ECOLOGICAL LANDSCAPE

All of my work is about slipping things in, inserting an order or a structuring, yet making an interface so that in the end, rather than a hierarchy, there is a balance and tension between the man-made and the natural."

Maya Lin

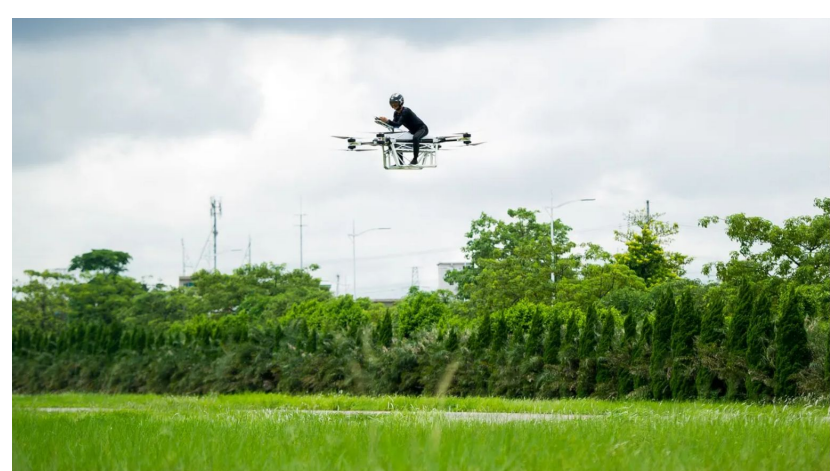


integrated planning of existing cbd/ new ecological developments /augmented city scape/ and a flight network to connect



Dissolving road infrastructure , untreating city fabric  
- toward a new rural state.

green corridor is an area of habitat connecting wildlife populations separated by human activities or structures (such as roads, development, or logging). This allows an exchange of individuals between populations, which may help prevent the negative effects of inbreeding and reduced genetic diversity (via genetic drift) that often occur within isolated populations. Corridors may also help facilitate the re-establishment of populations that have been reduced or eliminated due to random events (such as fires or disease). This may potentially moderate some of the worst effects of habitat fragmentation,<sup>[2]</sup> wherein urbanization can split up habitat areas, causing animals to lose both their natural habitat and the ability to move between regions to use all of the resources they need to survive. Habitat fragmentation due to human development is an ever-increasing threat to biodiversity,<sup>[3]</sup> and habitat corridors are a possible mitigation."



"At the moment, the autonomous urban aircraft market is still a bit of a Wild West. Dozens of start-up companies are competing to develop commercial jetpacks, flying motorbikes and personal air taxis. Venture capitalists, auto and aviation corporations (even rideshare company Uber, with its ambitious Uber Elevate) are staking claims on the burgeoning industry, which may be worth as much as \$1.5tn (£1.1tn) by 2040. Meanwhile, aviation authorities hash out the policies and safety standards that will govern this new realm of transport.."

the technology is ready , cargo/ aquircuilatural / passenger drones will become part of our daily experience. one of its key implication is it offer us connectiviely without physical grid. Another key tech to answer raising concern for regarding social distance and off grid living



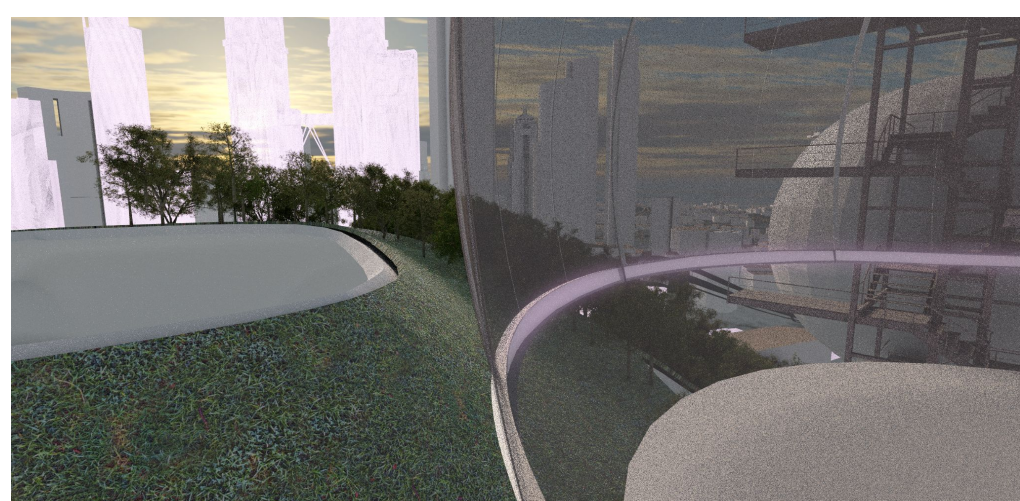
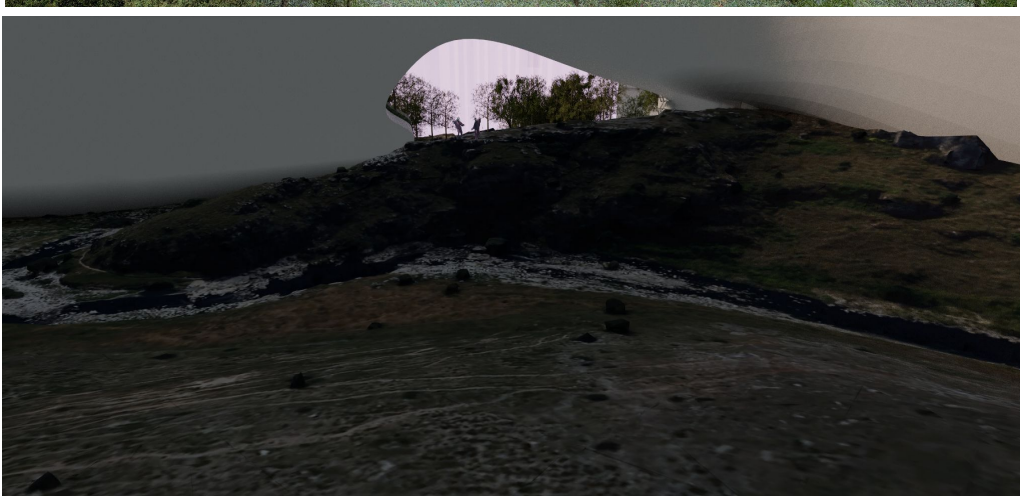
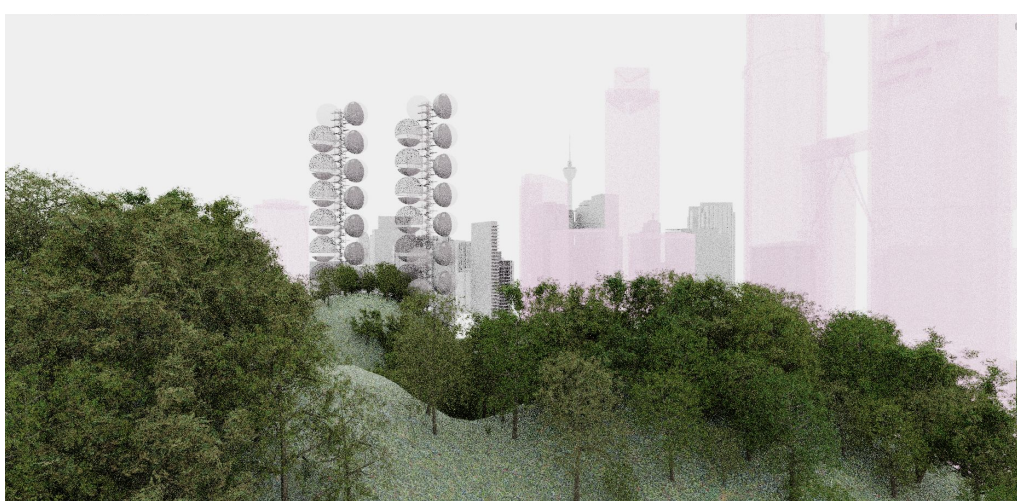
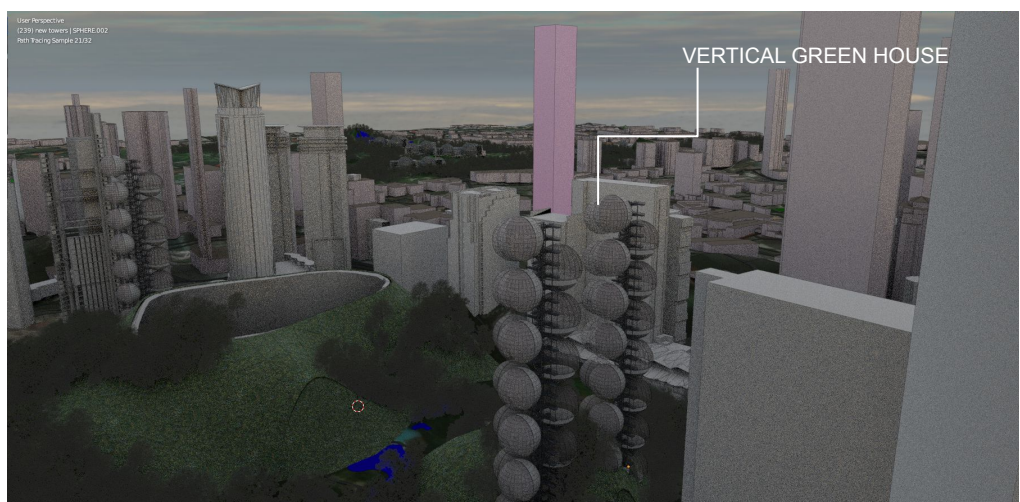
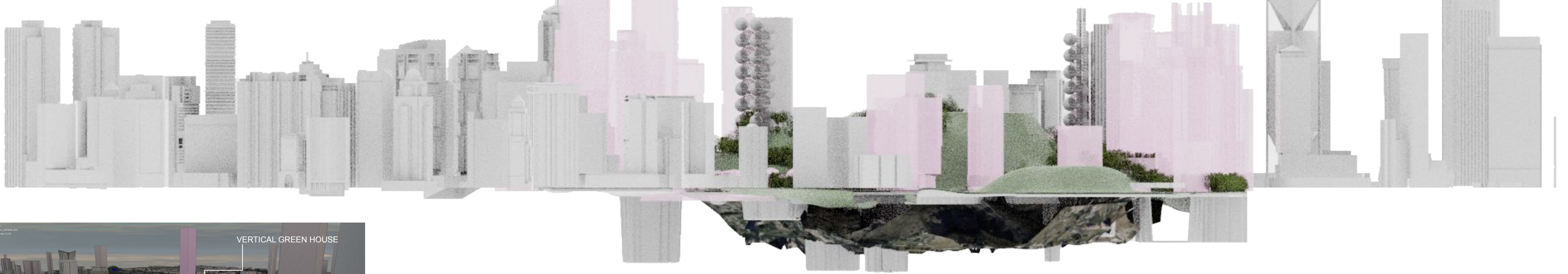
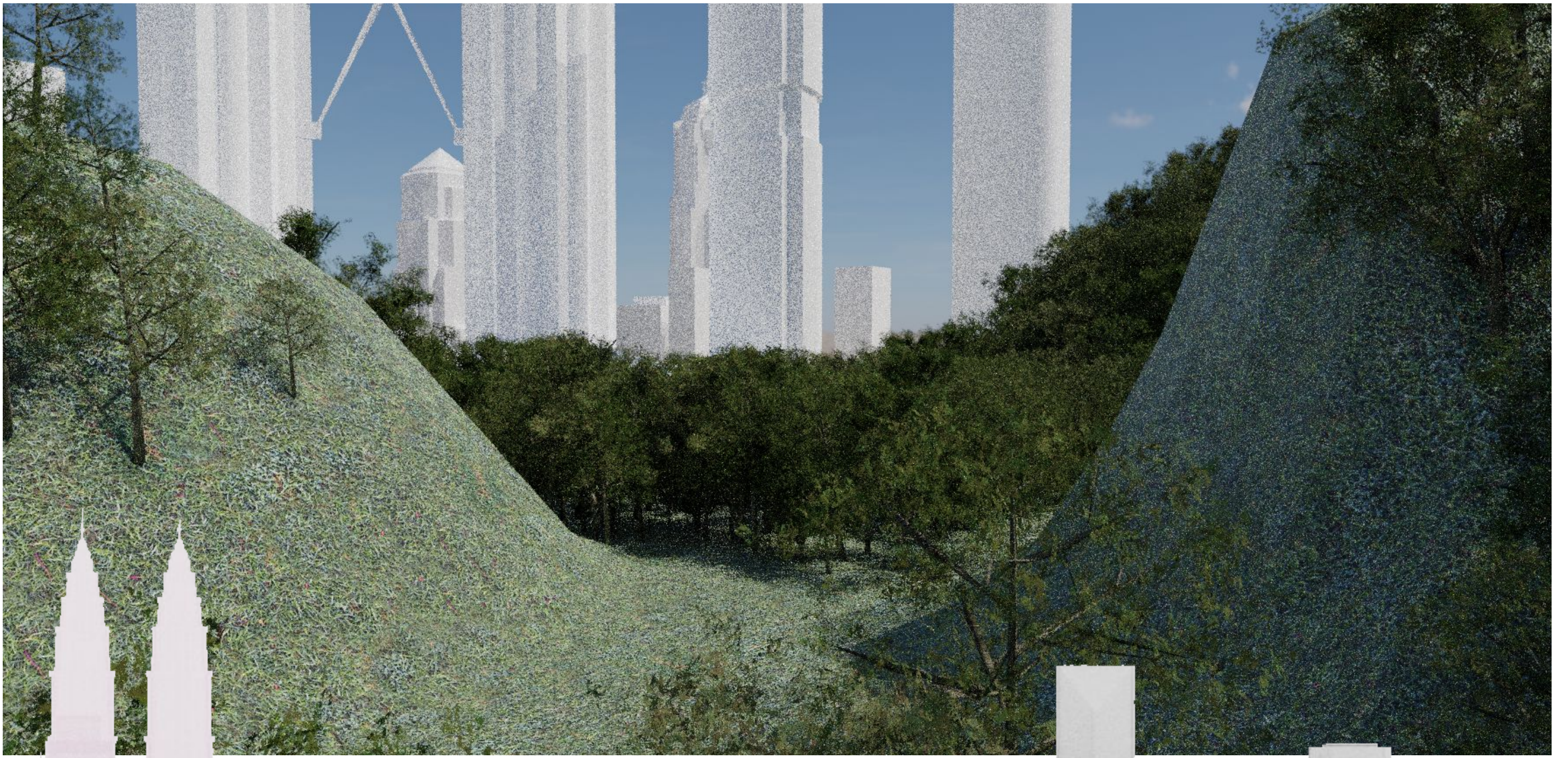
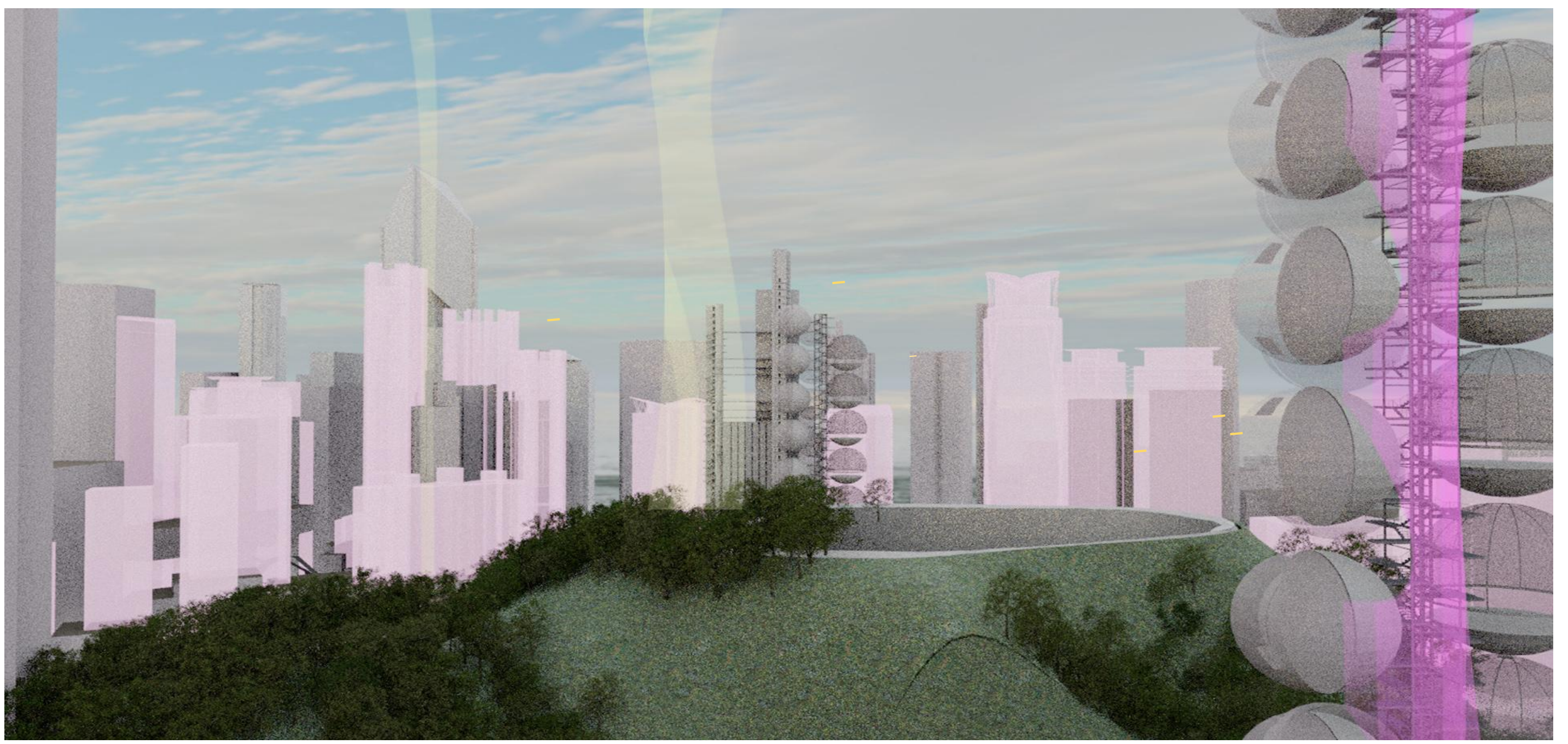
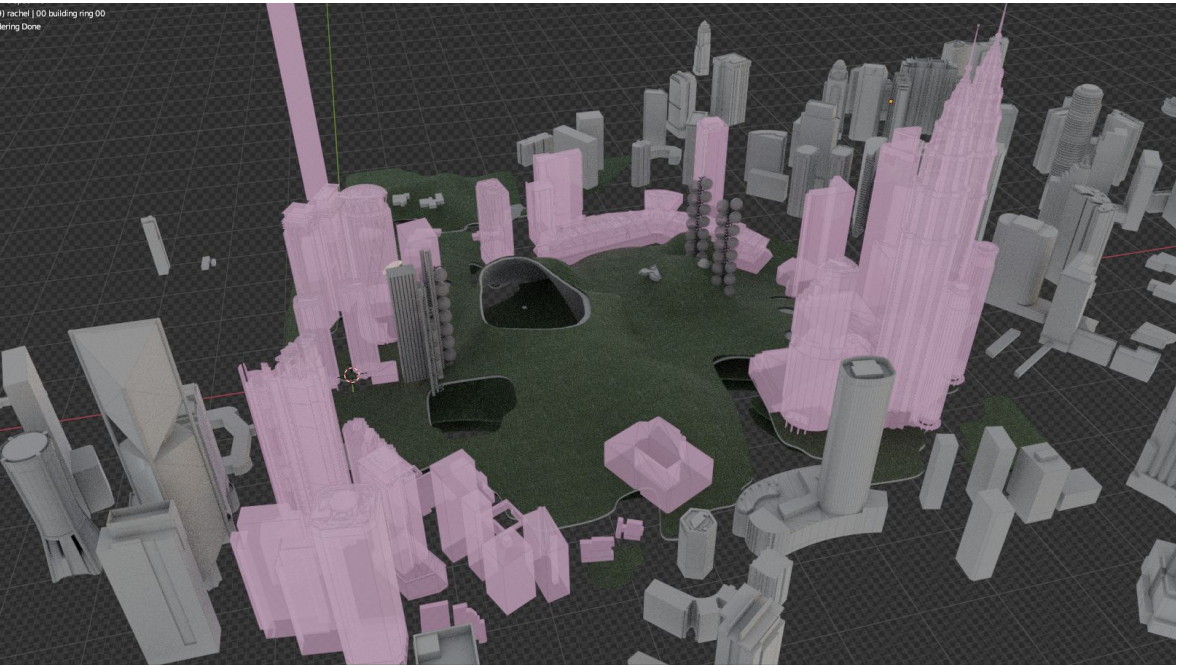


To restart the future is by remaking realistic landscape urbanism ideas:

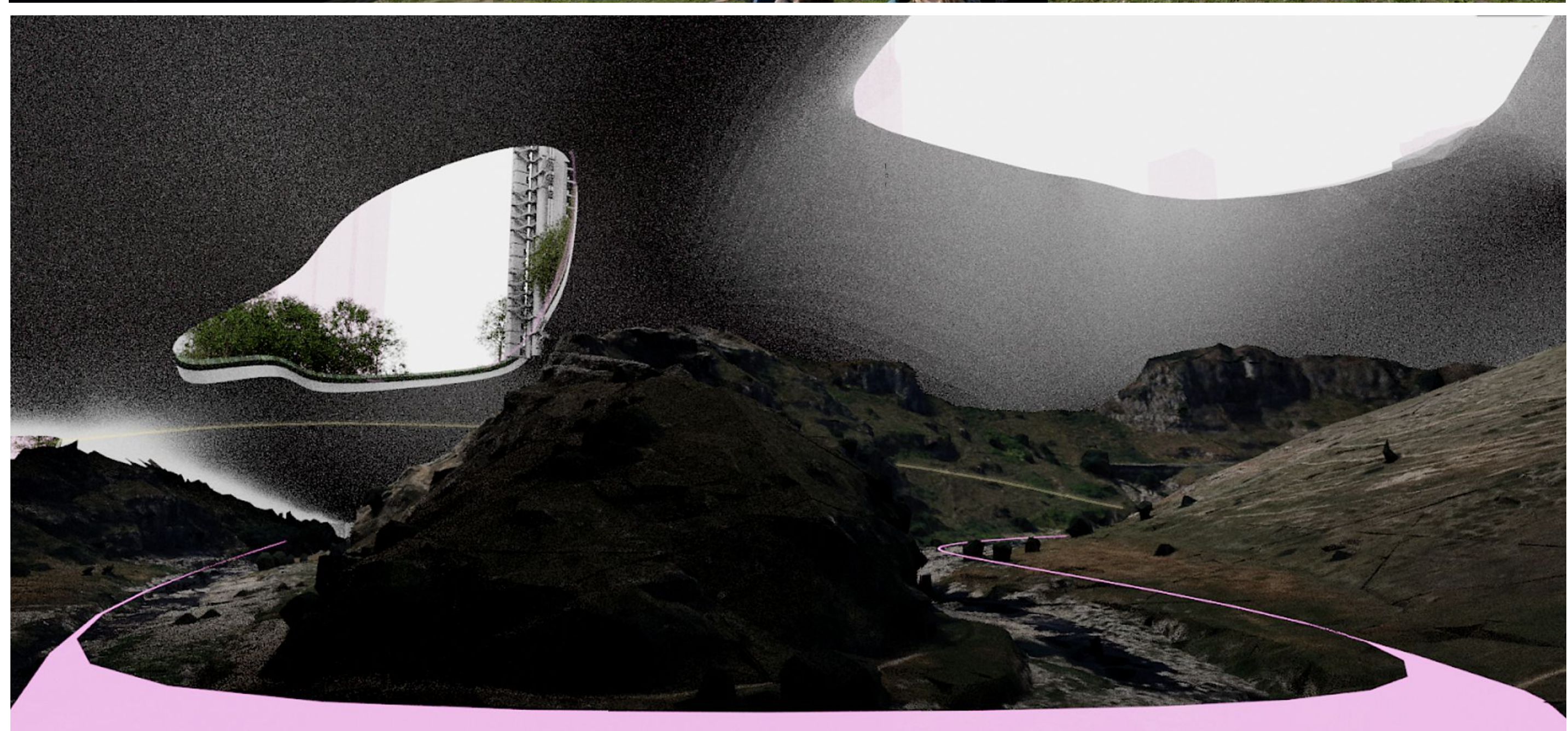
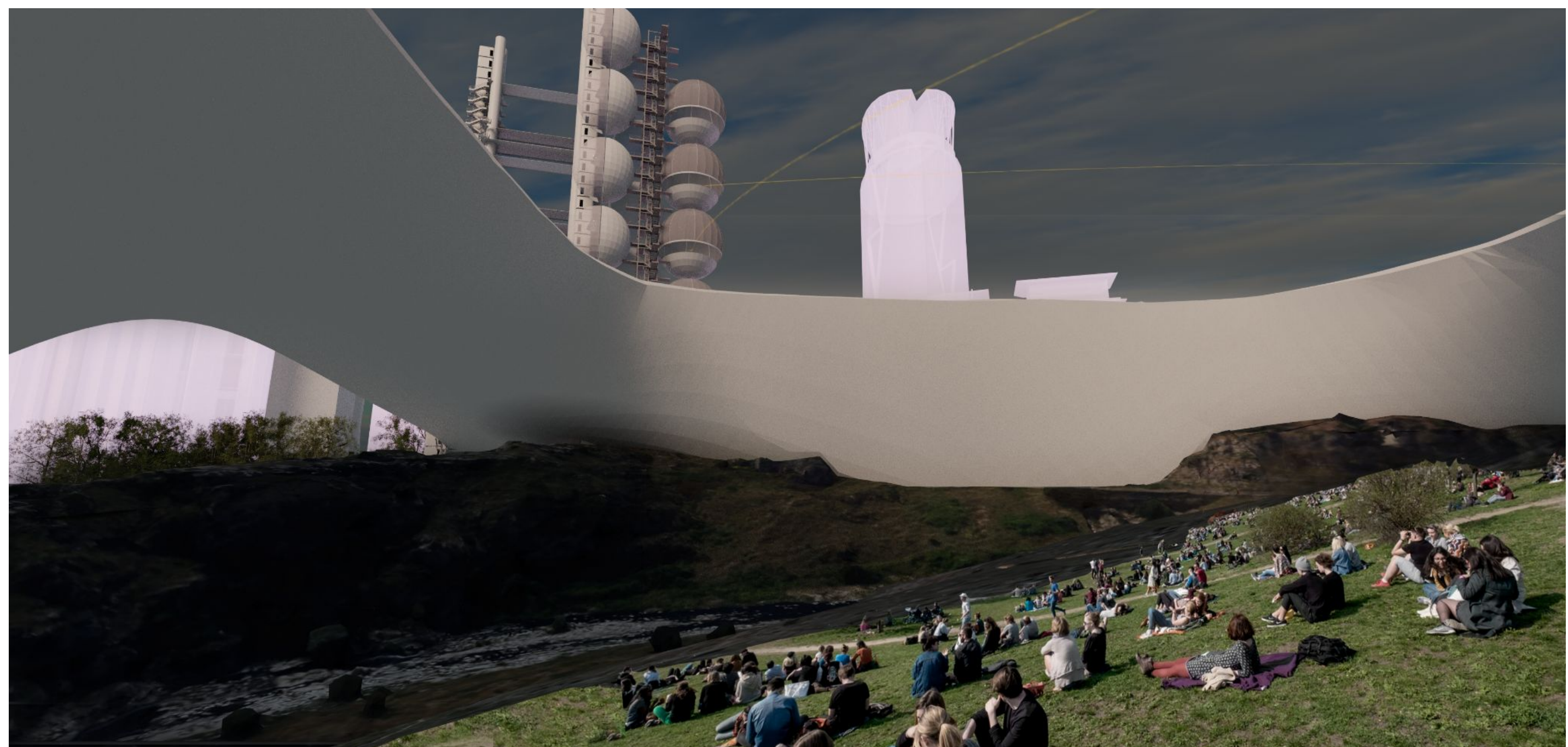
By visualizing a future without conventional urbanization, and to rebuilt and conserve nature is never enough. We should actively work out how to regress the human aspects, by allowing a true natural landscape urbanism to take place.



in the future, architecture will be "fused" with a virtual DIMENSION situated in the new true rural context.



contain in this virtual collectiveness, are memories, lights, moments we share.





Augmented Reality (AR) , an interactive experience of a real-world environment where the objects that reside in the real world are enhanced by computer-generated perceptual information, sometimes across multiple sensory modalities, including visual, auditory, haptic, somatosensory and olfactory.

Putting technical definitions aside, the planning of AR should happen parallel to our physical world.

Augmented urban landmarks will become part of our collective awareness and form part of our seamless cityscape. At the opposite end of our consciousness, AR can be modest, undetected, and exist only as a shade of light , with a subtle hint that improves and "touch up" our consciousness without us knowing it.

